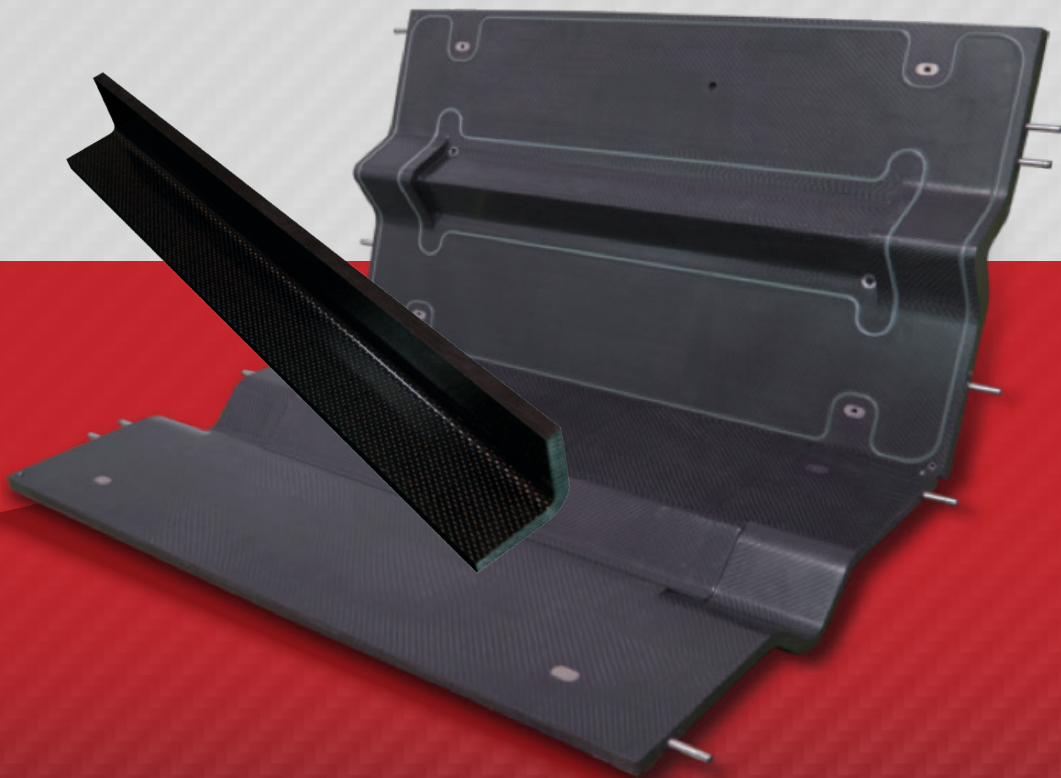




SHTM - SELF HEATED THIN MOLD

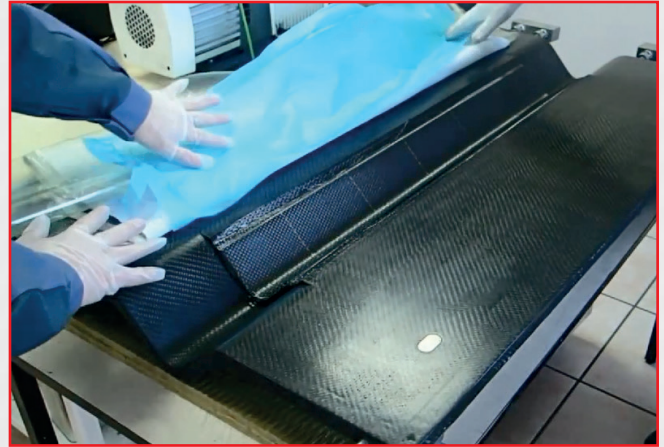


CHARACTERISTICS

In order to achieve greater cost savings and optimization in the manufacturing process for composite parts, we have developed a new **thin and self-heating composite tooling** solution with integrated self-clamping system, for low pressure.



Preforming



SHTM Compaction



Molding



Unmolding



SOME OF THE ADVANTAGES :

- The produced parts have good aspects on both sides, typical of RTM technology.
- The autonomy of the system : no need for autoclave, press or oven, so no need for big investments.
- Increase of the fiber volume fraction up to 60 %.
- Close to zero consumables : reduction of recurring costs and time saving.
- Precise control of the mold temperature : the heating circuit is close to the molding surface.
- Good thermal dynamics with low heating power. Good thermal homogeneity of the molding surface: $\pm 2^{\circ}\text{C}/3.6^{\circ}\text{F}$ at $180^{\circ}\text{C}/356^{\circ}\text{F}$